

WEDDINGS



Punga Cove

MARLBOROUGH SOUNDS - NEW ZEALAND



— TABLE OF CONTENTS



PUNGA COVE RESORT - VENUE 03

FROND SUITES 04

FERN SUITES 05

MAMAKU APARTMENTS 06

KORU CHALETS 07

BASECAMP ROOMS 08

CATERING 09

TRANSPORT RATES 10

TERMS AND CONDITIONS 11



— PUNGA COVE VENUE HIRE

Punga Cove offers an intimate wedding venue for up to 50 guests, including accommodation.

We offer a unique and personalised approach to planning and hosting your Punga Cove wedding, ensuring it is the perfect day you've always dreamed of.

With extraordinary views from many vantage points, waterfront jetty and beachfront, delicious food in our award-winning Punga Fern restaurant, well-appointed accommodation for up to 60 people and friendly staff, Punga Cove offers a truly unique Marlborough wedding experience.

The private setting gives you and your friends and family the chance to spend quality time together in a relaxing location.

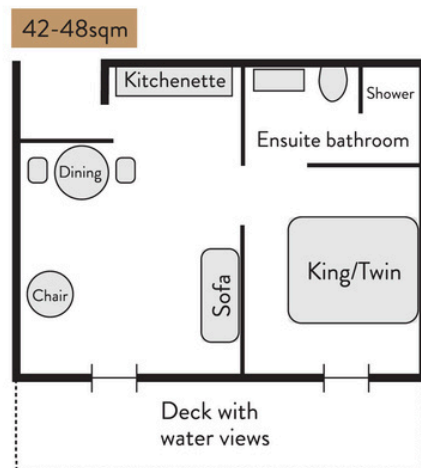
PUNGA FERN RESTAURANT

- | | |
|---------------------------|----------------|
| • 6 April - 30 April | \$6,000 |
| • 1 May - 30 September | \$4,000 |
| • 1 October - 15 December | \$6,000 |

BANQUET SEATING (Maximum Numbers)

- | | |
|--|------------------|
| • Restaurant Banquet - Cocktail-style with bar leaner tables | 50 guests |
|--|------------------|

All prices are nett, gst inclusive and effective from 6 April 2026.



— FROND SUITES

RELAX IN STYLE AND COMFORT

Punga Cove's one-bedroom Frond Suites and wake up to incredible views over Endeavour Inlet. Take in the vista from your spacious private sun deck.

Each of our five hillside suites accommodates up to two guests in a king-sized bed, or twin beds.

Enjoy the convenience of a mini fridge with tea and coffee making facilities, a dining table and a comfortable living area with a sofa. All our suites come with well-appointed ensuite bathrooms with a shower, and heating/cooling air conditioning.

PRICING

- 6 April - 30 April
- 1 May - 30 September
- 1 October - 15 December

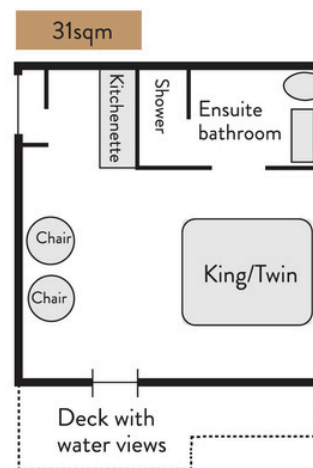
\$520 per King/Twin

\$400 per King/Twin

\$570 per King/Twin



All prices are nett, gst inclusive and effective from 6 April 2026.



FERN STUDIO

ELEVATED SEA VIEWS

The elevated hillside position of Punga Cove's two studios makes them perfect for enjoying sweeping views across Endeavour Inlet from your sun-drenched private deck.

Each studio includes a king-sized bed that can be configured into two twin beds if required, an ensuite bathroom and kitchenette with a fridge and tea and coffee making facilities.

Both studios include a sitting area with views, and heating and cooling options.

PRICING

- 6 April - 30 April
- 1 May - 30 September
- 1 October - 15 December

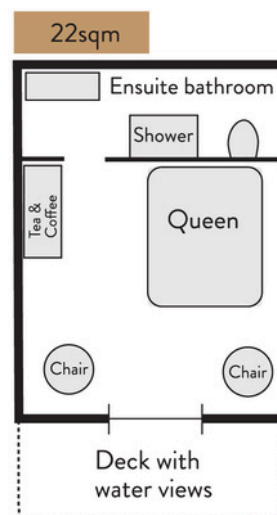
\$490 per King/Twin

\$380 per King/Twin

\$550 per King/Twin



All prices are nett, gst inclusive and effective from 6 April 2026.



KORU CHALETS

RETRO COSY COMFORT

Nestled among native bush, Punga Cove's unique A-frame Koru Chalets are a cosy retreat for up to two guests.

Each of the five chalets has a queen sized bed, seating area, ensuite bathroom with shower, and mini fridge with tea and coffee making facilities.

The Koru Chalets are perfectly positioned to harness the sun and beautiful views over the forest and the sea, which can be enjoyed either from the private balcony or from indoors.

PRICING

- 6 April - 30 April
- 1 May - 30 September
- 1 October - 15 December

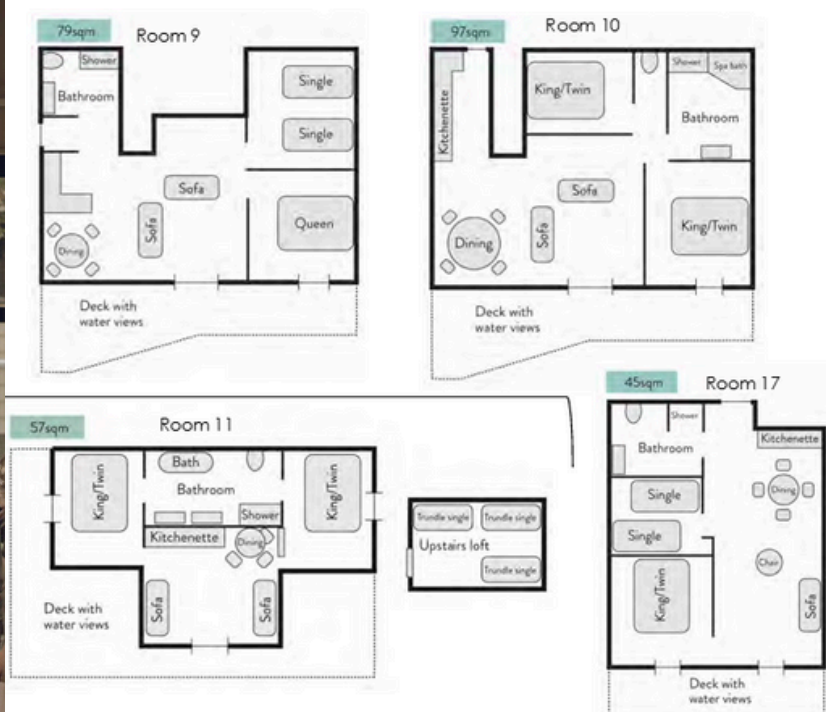
\$390 per King/Twin

\$320 per King/Twin

\$450 per King/Twin



All prices are nett, gst inclusive and effective from 6 April 2026.



MAMAKU APARTMENTS

SPACIOUS AND VERSATILE

Punga Cove's four Mamaku Apartments offer great versatility for all types of groups, with a different choice of layout and bed configuration in each unit. All four apartments include two bedrooms.

All Mamaku Apartments have open plan living areas, which flow onto a spacious sun deck positioned to make the most of the views over Endeavour Inlet. Two of the rooms have cooking facilities. A small kitchenette offers the convenience of a fridge, tea and coffee making facilities.

Two of our Mamaku Apartments have a spa bath in the bathroom, while the other apartment has a bathroom with a shower.

Please note, each of the four Mamaku apartments has a different layout and bed configuration, and we can accommodate more guests if required. Please contact us if you have specific needs or would like to sleep more than four people.

PRICING

- 6 April - 30 April
- 1 May - 30 September
- 1 October - 15 December

\$650 per King/Twin

\$530 per King/Twin

\$690 per King/Twin

All prices are nett, gst inclusive and effective from 6 April 2026.



— BASE CAMP ROOMS

LOW COST OPTIONS

Punga Cove's Basecamp rooms are basic studio rooms with shared bathroom facilities, featuring double, twin and single room options.

The Basecamp ensuite room can sleep three* and features a queen and single bed, as well as a private bathroom. There is 1 Basecamp ensuite rooms.

*additional charge for 3rd person.

The Basecamp double or twin rooms can sleep two and features either a queen or two single beds. There are 2 Basecamp double rooms and 1 Basecamp twin rooms.

The Basecamp single rooms sleep one and features a single bed. There are 6 Basecamp single rooms.

For each of these rooms, the bathroom is shared with the exception of Basecamp ensuite, linen and towels are provided. Tea and coffee making facilities are available in shared facilities.

PRICING

- 6 April - 30 April Basecamp Ensuite **\$260 per room** / Basecamp twin/double **\$230 per room** / Basecamp single **\$150 per room**
- 1 May - 30 September Basecamp Ensuite **\$190 per room** / Basecamp twin/double **\$170 per room** / Basecamp single **\$120 per room**
- 1 October - 15 December Basecamp Ensuite **\$280 per room** / Basecamp twin/double **\$240 per room** / Basecamp single **\$160 per room**

All prices are nett, gst inclusive and effective from 6 April 2026.



CATERING

CANAPES

- Two hot and two cold options
- Three hot and three cold options

\$30 per guest

\$40 per guest

GRAZING/HARVEST TABLE

- A selection of cheese and charcuterie accompaniments

\$35 per guest

PRE-DINNER WEDDING BASKETS

- Antipasto-style platter
- Optional - Add on bubbles from wine list

\$35 per guest

POA

WEDDING MENUS

- Two course set menu
- Three course set menu
- Platter style - 2 course
- Platter style - 3 course

\$100 per guest

\$120 per guest

\$100 per guest

\$120 per guest

MAIN MEALS - Prior or After Wedding

- Low 'n' slow BBQ lunch or dinner
- **OR** Roasted ham
Comes with with selection of salads, accompaniments and breads

\$75 per guest

\$60 per guest

SUPPER

- A selection of savoury and sweet treats

\$30 per guest

BEVERAGES

- Beverage list will be sent on request as options change consistently
- No BYO for beverages

All prices are nett, gst inclusive and effective from 6 April 2026.



TRANSPORT RATES

LAND CHARTER - BLENHEIM TO PICTON

- | | |
|---------------------------|--------------|
| • Van - up to 10 guests | \$290 |
| • Van - up to 19 guests | \$500 |
| • Coach - up to 48 guests | \$800 |

ONE-WAY PRICING - PER VEHICLE, NOT PER PERSON.

VESSEL CHARTERS - PICTON TO ENDEAVOUR INLET

- | | |
|--|----------------|
| • Private MTC vessel - up to 75 pax | \$3500 |
| • Private Cougar Line water taxi - 4 pax
(\$50 per additional person - up to 33pax) | \$550 |
| • Scheduled Cougar Line - one way | \$63pp |
| • Scheduled Cougar Line - return | \$108pp |



All prices are nett, gst inclusive and effective from 6 April 2026.

—TERMS & CONDITIONS

DEPOSITS

The venue hire is a non-refundable deposit required to guarantee confirmation of the wedding date.

ACCOMODATION REQUIREMENT

When a wedding is held at Punga Cove Resort, all accommodation* must be booked and paid for by the wedding party and/or their guests for the night of the wedding.

*with the exception of the base camp rooms

PEAK SEASON EXCLUSION (BLACKOUT) DATES:

No weddings are available on Public Holidays or long weekends. Blackout dates also apply seasonally dependent on business levels and lodge closures.

Peak season blackout dates:

1 January - 5 April and 15 - 31 December

WINTER MAINTENANCE PERIOD:

We close during winter months - please enquire for exact dates.

All prices are nett, gst inclusive and effective from 6 April 2026.